

0.1. The Battle of the New Formula

0.1.1. Less than two months from F-Day, the date of the new formula on 1 July 2008, the battle hotted up [but then fizzled out once I blew the whistle] on the Great Formula Spin-a-Thon.

0.1.2. The **real** issue is not the formula at all but the matter of **funding** for the blood suckers that ask the tax payer to keep them in "disguised unemployment". All the usual suspects are there but there is a new twist with the recent change to Kevin '07. Firstly Elspeth McElspeth and her band of HLLs for the last 11 years have simply taken it as a "given" that they **will** "get" their normal \$3 billion pa in return for their vote. But something went wrong in November 2007 with that time honoured Howard formula [no pun intended] so even Secret Wimmins Business may not get the nod under Kevin '07 [though he has retained Howard's "Ministry of Secret Wimmins Business"].

0.1.3. On the "Mens" side, things are even more uncertain. For most of the Howard Dynasty the so called mens groups battled **each other** for "peak body status" while Elspeth reigned supreme [with extra cheese!]. As Howard became desperate in 2007, he had old Misery-Guts Ruddock shell out hundreds of \$80,000 "nothing asked, but your soul" funding packages with gay abandon [no pun intended] on a Cash for Comment basis that would make John Laws blush.

0.1.4. So these "men", who morphed into FemiMen, are now as shags on rocks having thrown overboard any "ideals" they may have had for a Howard ideal [get elected] which in turn was thrown overboard by J Doe [and Ms Doe].

0.1.5. And so it will be no surprise to those who have followed this debacle along the Yellow Brick Road that the new formula might become the next sacrificial lamb, with the Cash for Comment

freaks cowering under the wings of Elspeth to heap shit on the new formula, and why Little Ozzie Buttercups might starve to death [while on their Overseas Trips].

0.1.6. A particularly obnoxious glove puppet called Matrix was given the task of announcing the Boo Hoo, Shock & Awe story, quoting *ad nauseam* from Ms Elspeth about the impending plight of Buttercups. The new Minister did his bit to say those Buttercups would get **more** from J Doe, good old Matt Miller from CSA gave his Parkinson Epistle on Cost of the Children Rules OK and a "concerned lawyer" was reported rubbing her hands in glee at the confusion created.

0.1.7. But then Matrix went too far. He gave "the Examples", but not saying who had made such assertions. After I pointed this out in the Forum of familylawwebguide.com.au, instead of the normal practice of blocking any further comment, **the whole thread was zapped** and all supporting media reports etc were similarly junked [including their new "best friend" Elspeth McButtercup].

0.1.8. But the thing that alerted me to the fact there was a Smelly Rodent in the mix was that this site has a Ragarse Renegade, Mike T, from Y2K who [same as for the Y2K freaks Howard paid \$600 million to, supposedly to "make the new formula"] had taken 3 years to make his own new formula module. But this dude had **declined** to jump in and apply his new module to **correct** the Examples, which sought to suggest Buttercup was heading for starvation.

0.1.9. But Dear Reader, once again the csacalc.com module, created way back in 2005 when McParkinson announced his bold new plan, can cut through the BullShit and get that Tampa back on the rails [to use a mixed metaphor].

0.1.10. I did not get an exact copy of Case #1 [because of the sudden nature of the Zap] but it said Mike \$90,000, Megan \$50,000 with 3 teenage kids, one of which spends 2 days a week with dad. The deleted Boo Hoo example said child support goes from 2 grand to 1 grand per month [so Boo Hoo, watcha gonna do about it?]. Then all the "executive gloves" jumped in to wave the Buttercup flag on the Marble Arch, as it were.

0.1.11. But before going to the true results I will mention a few things for you to ponder. Firstly there is the incomplete nature of the data, eg no ages of kids, meaning to some extent there is an escape hatch for those making the deception [but obviously not enough confusion in these cases as the whole forum thread had to be zapped].

0.1.12. Secondly, eg "Phil earns \$50,000 a year and **rarely sees the children**", the Examples use derogatory language [rather than simply say less than 14% access/contact/visitation/time spending]. This is part of the warm up for the new battlefield of the 14% threshold to replace the 30% threshold, where we will see PAS turned on its head and blamed on the [deadbeat] dad.

0.1.13. Thirdly, in their haste to be obfuscatinal they dispensed with the Multicultural niceties of the PC Professor in **his** examples where we has Peng and Meng with kids Ping and Pong. And of course, in using Mike & Megan etc, they then forgot to say "Mike & Megan are not their real names", as required by new PC Rules at the "Family Law Courts".

0.1.14. Here are the results of the assessments:

CHILD SUPPORT INFORMATION TECHNOLOGY SYSTEM

© Child Support Solutions

4.0 Assessment

These initial payment particulars should agree with your Notice of Assessment from the CSA

These are the payments under the proposed new formula

Initial payment:	\$445.38 / week
	\$1,929.97 / month
	\$23,160 / annum

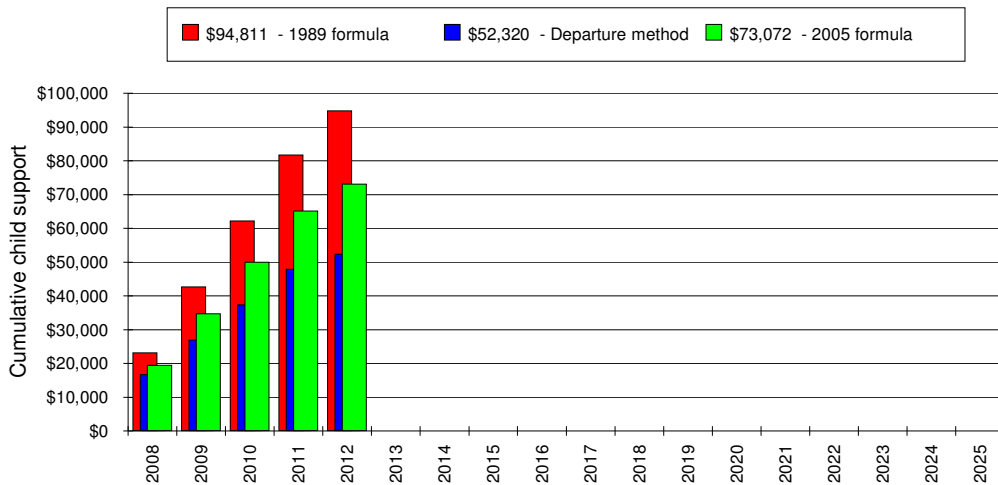
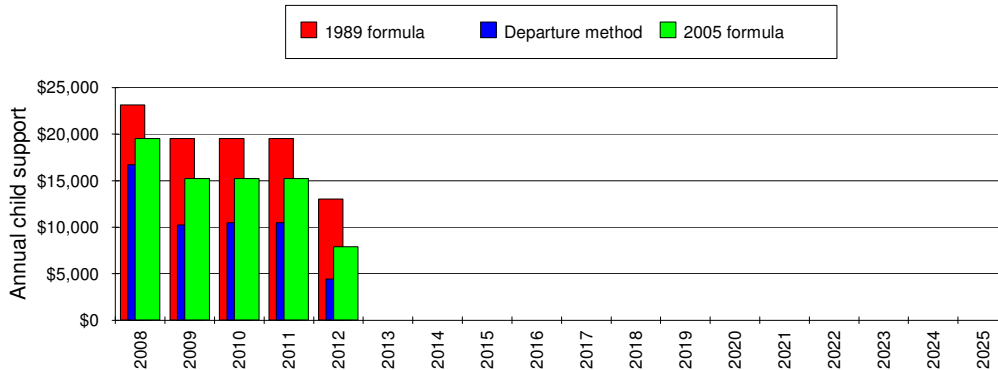
\$373.99 / week
\$1,626.17 / month
\$19,514 / annum

2005 is 84% of 1989 formula

Income of payer: \$90,000 Income of payee: \$50,000

5.0 Projection

Total payment, 1989 formula:	\$94,811
Average payment, 1989 formula:	\$371.31 per wk for 4.91 yrs
Total payment, 2005 formula:	\$73,072
Average payment, 2005 formula:	\$286.18 per wk for 4.91 yrs
2005 is 77% of 1989 formula	
Total payment, departure:	\$52,320
Average payment, departure:	\$204.91 per wk for 4.91 yrs
departure is 72% of 2005 formula	



0.1.15. So Matrix was ascribing Big Porkies to McElspeth. The 2 grand was fairly correct for present formula at \$1,929 per month, but the new formula says \$1,626 per month and not \$1,000 as reported.

0.1.16. But is that \$300 per month drop **justified**? Well the results to 2012 say that will be a \$21,000 drop [GREEN vs RED], but the BLUE columns say even the new formula is **\$21,000 too much**. Remember that the precious little Professor is claiming that his new formula is "based **directly** on" these **self same** BSU figures [plagiarised as Henman figures]. That is crap. He **starts** with these Henman/BSUs but then goes into the good old AMTSF or whatever the Hestia Uplift Factor is called these days [AverageMaleTesticleSeparationFactor?] or some such **meaningless parameter**, and then back to a good old 1989 **percentage**, bearing no relation to the BLUE figures at all.

0.1.17. Secondly please look at these figures below regarding the relationship of child support to FTB. The Example was intentionally obtuse, simply saying 3 teenagers, so I have tried to be fair and only put **one** over 16. The results say with Buttercup on \$50,000 that any child support that dad pays **over \$85.93** per week per kid has **no effect at all** on Buttercup's CentreLink.

0.1.18. So for these 3 kids, that [Rice & Asplund?] threshold figure is \$257 per week. So the drop from \$445 to \$373 per week has **no effect at all on Buttercup's CentreLink**, meaning that the Minister is blowing it out his arse about J Doe will "pay the extra", albeit it does apply [slightly] in the second example below.

0.1.19. And it gets worse. As each kid gets to 16 [not 18], his/her FTB morphs to Youth Allowance which is not tested against child support. So now **both** dad and J Doe pay at **full** rate to the Buttercup family. So how sick is **that** McElspeth my dear?

Social Security Calculations [otherwise proper]

The Social Security [Centrelink] implications in respect of Child Support are both esoteric and obfuscatory, all of that meaning that they are designed to confuse. The Assessment Act only refers to "Income Testing" whereas the testing resulting from Child Support is termed "Maintenance Income Testing", and MIT is currently only applied to Family Tax Benefit A. Also "the Pension" was renamed 10 years back.

The RED figure below is the MAXIMUM amount of child support that would alter the payee's FTB [ie provide "clawback" to the taxpayer]. Moreover, if the combined income of the payee and any other people in the same residence is as indicated in GREEN, then the RED figure reduces to the BLUE figure.

These are the figures required in a departure hearing at "Gyselman Step 3" or "otherwise proper", or in other words if the "just & equitable" amount calculated in this Report is above the RED/BLUE figure, then your application for departure has no effect on the taxpayer, so that would logically "enhance" your application.

Child	Initial	DOB	FTB A
Child #1	A	31/12/90	\$23.45
Child #2	B	31/12/93	\$94.50
Child #3	C	31/12/94	\$94.50
Child #4			
Child #5			
Child #6			

Date of assessment
Sat 2 Feb 2008

Total FTB per week	\$212.45
Base FTB per week	\$70.35
Total Testable FTB per week Before testing	\$142.10
Total Child Support per week to nullify FTB	\$324.56
Maximum Child Support per week per child to nullify FTB where:	
Payee has a combined family income less than \$41,318	\$108.19
Maximum Child Support per week per child to nullify FTB where:	
Payee has a combined family income of \$45,000	\$98.75
Payee has a combined family income of \$50,000	\$85.93
Payee has a combined family income of \$55,000	\$73.10
Payee has a combined family income of \$60,000	\$60.28
Payee has a combined family income of \$65,000	\$47.46
Payee has a combined family income of \$70,000	\$34.64
Payee has a combined family income of \$75,000	\$21.82
Payee has a combined family income of \$80,000	\$0.00

0.1.20. But as we speak, those boffins at csacalc.com have seemingly outdone themselves and produced yet another analytical tool to assist those [and there **may** be none] who yearn for truth and honesty in all mortal pursuits.

0.1.21. The start point is the **RED** figures, which is the year by year results of what Buttercup has to shell out, according to the BSU mba tables [+ CPI, about 31% increase on 1996 figures]. That is to say this is not the Mee & Ferguson/Gyselman type "apportionment" of support after taking into account her own income, but **everything she pays out**.

0.1.22. Then the **GREEN** is the addition of Child Support [shown as **BLUE**] and FTB A [shown as **YELLOW**]. So this is the total of what Buttercup gets, supposedly [in a funny sort of way] to "balance" what she has to shell out [**without** her contributing **one cent** to the kiddies].

0.1.23. But the goodies do not end there. This exercise is limited to the only "*income tested pension, allowance, benefit and payment*" which has any interaction with Child Support, which is the FTB A via the MIT. So all those other goodies are in addition to this exercise.

0.1.24. The first Indicator is the ratio of Provision over Needs [**GREEN** vs **RED**], and the horrid news for McElspeth is that after 1 July 2008 the excess drops from 75% to 47%, possibly downgrading trips from Disneyland LA to Disneyland Hong Kong.

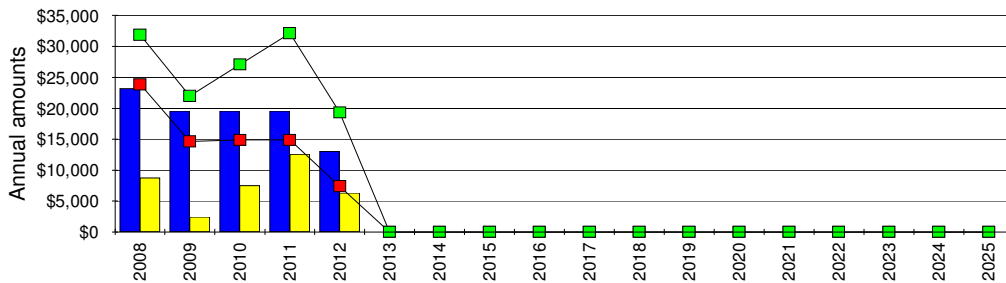
0.1.25. The second Indicator is the Ratio of contribution to this excessive payment. After 1 July 2008, J Doe [if he is tuned in, and I doubt he is] will increase his percentage from 28% to 34%. It would be Intellectually Irresponsible for me not to ask the question why J Doe has to contribute at all as the [deadbeat] dad is already picking up the tab.

Public Expenditure [and Ethics] Calculations

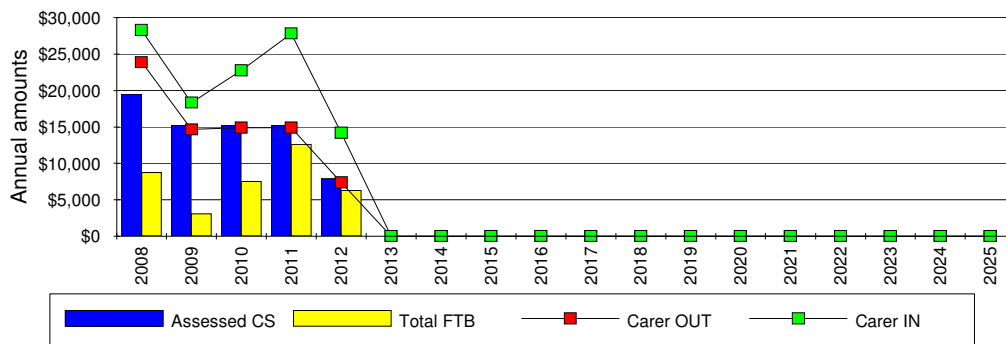
The figures below provide the answers in the specific case to the vexed questions of firstly the level of child support legislated, and secondly the extent to which the taxpayer also provides support to the "Carer".

However it needs to be understood that this exercise only involves the single entity in a vast array of "pensions, benefits, allowances and payments" which is "tested" [by the MIT], or in other words has any relationship to Child Support. This is the Family Tax Benefit A [which morphs to "Youth Allowance" at 16 years of age].

1989 Formula



2008 Formula



	Child Support assessed	FTB + Youth Allowance	Carer IN Blue + Yellow	Carer OUT BSU figures + CPI	Ratio Payer / FTB
1989 Formula	\$94,811	+\$37,608	= \$132,418	\$75,689	72 / 28
2008 Formula	\$73,072	+\$38,254	= \$111,327	\$75,689	66 / 34

	Carer IN	Carer OUT	Percentage Provision over Needs
1989 Formula	\$132,418	\$75,689	175%
2008 Formula	\$111,327	\$75,689	147%

0.1.26. The second example goes from bad to worse, and in this case I saved the trivia, per:

"Kate has two pre-schoolers and is not working. Former husband Phil earns \$50,000 a year and rarely sees the children. Under the old system he paid \$240 a month, but that will drop to \$127 a month from July."

0.1.27. Well even a cursory glance at those figures [ie Phil on \$50,000] says they are wrong, so once we put the case into the csacalc.com system [below] we see the child support drops 17% from \$778 per month to \$647 per month. The overall drop to 2024 is about \$17,000 or 11% [because of the "increase for teens" in new formula].

0.1.28. So the true figure at present is **over 3 times** the quoted \$240 per month by Matrix McElspeth, and the reduction on 1 July 2008 is but **one third** of the 47% drop claimed. No wonder they had to compare notes and zap the lot, huh?

0.1.29. The Centrelink data below in this example reveals that J Doe will in fact fund half of the drop, ie \$65 per month. So it remains to discover was the drop fair or not, by looking at the BLUE figures. For year 2008 it will be seen that the GREEN and BLUE are line ball, saying Phil was paying a bit too much under the present formula and it will be "just right" after 1 July 2008.

0.1.30. But now we see the total brilliance of the csacalc.com system in its "forward estimate" capability, and I should mention that once MicroSoft "dumbed down" Excel in 1992, such macro driven capability was no longer possible, basically explaining why nobody from the "I.T. Industry" has been able to provide this capability.

0.1.31. The additional aspect for such as Matrix McElspeth conglomerate is they don't **want** to know the truth, as it interferes with their argued "need" for funds "to gets things fair". So it will be no surprise when I tell you that neither of the "two sides" sought to **use** the csacalc.com facility.

0.1.32. What we see is that the actual BSU/Henman figures have "bumps" every **three** years, rather than McProfessor's hysterical "*cliff effect once kids become teenagers*". So you will see the GREEN professorial columns only increase in 2019, whereas the true costs increase from 2011. What this means is that for this example the true "cost" to 2024 is some \$15,000 more than the present formula and \$40,000 more than new formula.

0.1.33. But is that unfair? Contrary to current spin, our Centrelink "safetynet" system is **not** a matter of either dad **or** J Doe pays, but a very **gradual ramp** up/down. So let's try this in the new csacalc.com system. As seen, J Doe jumps in to "save" the day, but it seems he more than saves it but gives a modest [Gold Coast?] holiday to boot.

0.1.34. So from 1 July 2008 a 32% **over** provision reduces to 28%, that being accomplished by J Doe increasing his "top up" to Buttercup from 35% to 40%. So it looks like even where the deadbeat dad is on less than the average wage, meaning the assessed Child Support does not quite meet Buttercups outgoings, that J Doe does not just make up the shortfall, but goes way beyond with a 40% top up. And remember that there are far **more** goodies to be had than mere FTB.

0.1.35. So in conclusion, it is easy to see why Matrix McElspeth Inc does not **want** to know any of these facts, but wants to continue to wage the normal gender war. But it also explains why they zapped the nasty attempt to spread their evil propaganda. So yet another victory for csacalc.com team.

CHILD SUPPORT INFORMATION TECHNOLOGY SYSTEM

© Child Support Solutions

4.0 Assessment

These initial payment particulars should agree with your Notice of Assessment from the CSA

These are the payments under the proposed new formula

Initial payment:	\$179.77 / week
	\$778.99 / month
	\$9,348 / annum

\$148.88 / week
\$647.34 / month
\$7,768 / annum

2005 is 83% of 1989 formula

Income of payer: \$50,000

Income of payee: \$15,000

5.0 Projection

Total payment, 1989 formula: \$155,799

Average payment, 1989 formula: \$177.18 per wk for 16.91 yrs

Total payment, 2005 formula: \$139,076

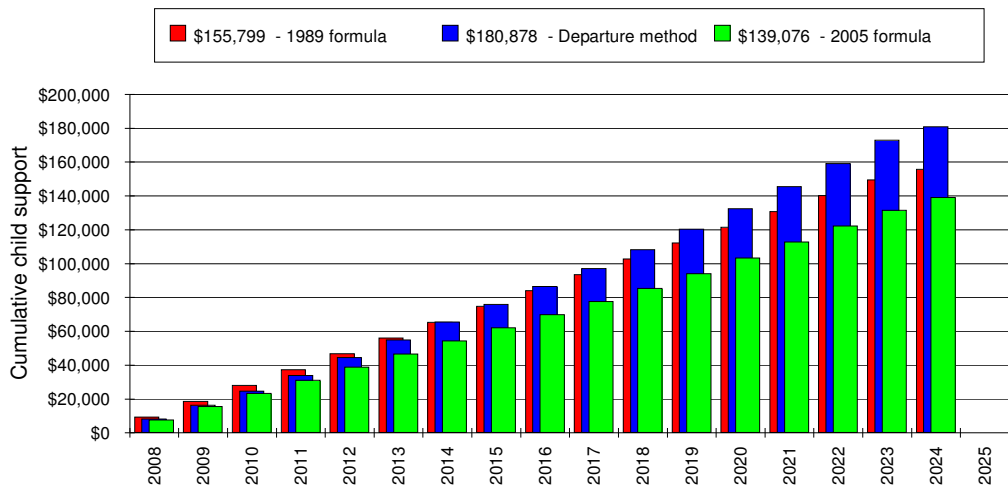
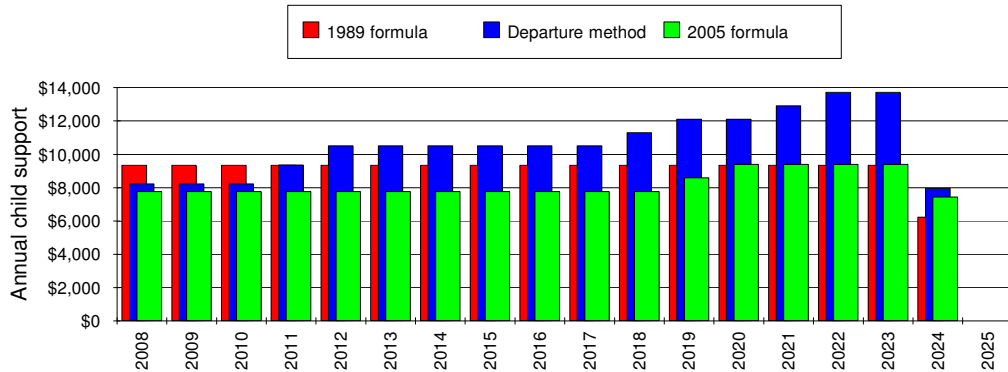
Average payment, 2005 formula: \$158.16 per wk for 16.91 yrs

2005 is 89% of 1989 formula

Total payment, departure: \$180,878

Average payment, departure: \$205.70 per wk for 16.91 yrs

departure is 130% of 2005 formula



CHILD SUPPORT INFORMATION TECHNOLOGY SYSTEM

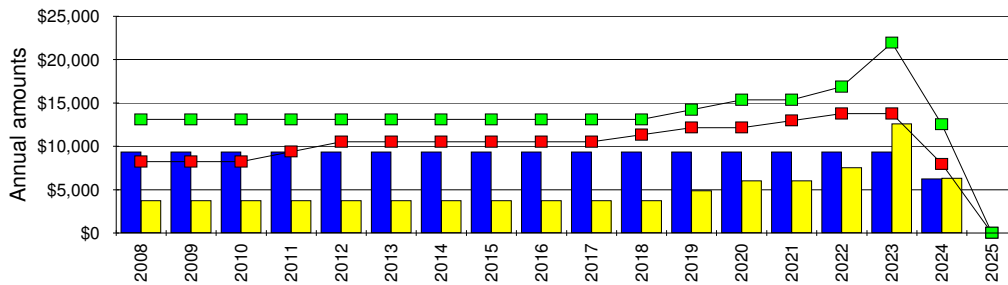
© Child Support Solutions

Public Expenditure [and Ethics] Calculations

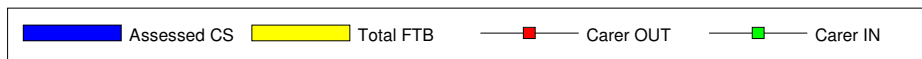
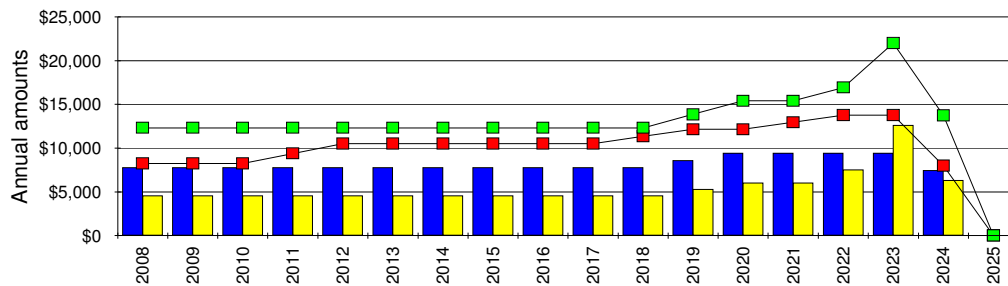
The figures below provide the answers in the specific case to the vexed questions of firstly the level of child support legislated, and secondly the extent to which the taxpayer also provides support to the "Carer".

However it needs to be understood that this exercise only involves the single entity in a vast array of "pensions, benefits, allowances and payments" which is "tested" [by the MIT], or in other words has any relationship to Child Support. This is the Family Tax Benefit A [which morphs to "Youth Allowance" at 16 years of age].

1989 Formula



2008 Formula



	Child Support assessed	FTB + Youth Allowance	Carer IN Blue + Yellow	Carer OUT BSU figures + CPI	Ratio Payer / FTB
1989 Formula	\$155,799	+ \$84,487	= \$240,286	\$181,498	65 / 35
2008 Formula	\$139,076	+ \$93,730	= \$232,806	\$181,498	60 / 40

	Carer IN	Carer OUT	Percentage Provision over Needs
1989 Formula	\$240,286	\$181,498	132%
2008 Formula	\$232,806	\$181,498	128%